



Glasbhealach Cluain Dúin go thoir theas Woodstock to South East Greenway Link

Public Consultation No. 2 Proposed Route Corridor Options

Introduction ✓

Kilkenny County Council is currently in the early stages of developing a greenway between Woodstock Estate, near Inistioge, Co. Kilkenny, and the South East Greenway at New Ross Co. Wexford. This project is funded by Transport Infrastructure Ireland (TII). Tetra Tech RPS have been appointed by Kilkenny County Council to provide multi-disciplinary consultancy services to progress the project through the design and planning stages, following Phases 1-4 of the TII Project Management Guidelines. We are currently in Phase 2 of the development and entering into our second period of public consultation.

Local Feedback

Local feedback is vital to the success of the project. We welcome your views, ideas and concerns on the following:

- Potential routes that could be considered.
- Locations, attractions, or facilities in your locality that could be attractive to, or benefit from a greenway.
- Scenic and / or heritage features in your area.
- Environmental / biodiversity features you wish to highlight to the project.

Project Overview ✓

The proposed project aims to enhance the local and regional walking and cycling recreational network, in particular serving as a link to the South East Greenway, Nore Valley Walks, East Kilkenny Cycle Route and the South Leinster Way. The proposed Greenway has the potential to boost tourism in the area, including increased visitor numbers to Woodstock Estate, Inistioge Village and other local attractions.

Project Benefits ✓

The Greenway will facilitate sustainable growth within the local communities in Inistioge, New Ross and other surrounding areas, through improved connectivity, increased tourism potential and providing a modal shift away from car trips to active travel usage.



**Sustainable
Economic
Growth**



**Increased
Tourism**



**Increase in
Active
Travel**



**Reduced
Carbon
Emissions**

Scan the QR code to access the website



What is Happening Now? ✓

The project is currently at Phase 2 Options Selection. The purpose of Phase 2 is to develop, examine and assess route corridor options to identify a preferred option for the project. The Study Area has been expanded from Phase 1 to ensure that all viable options are taken into consideration. The assessment of the route corridor options will be taken in accordance with the Strategy for the Future Development of National and Regional Greenways, the Code of Best Practice for National and Regional Greenways, and Transport Infrastructure Ireland (TII) Project Management and Project Appraisal Guidelines.

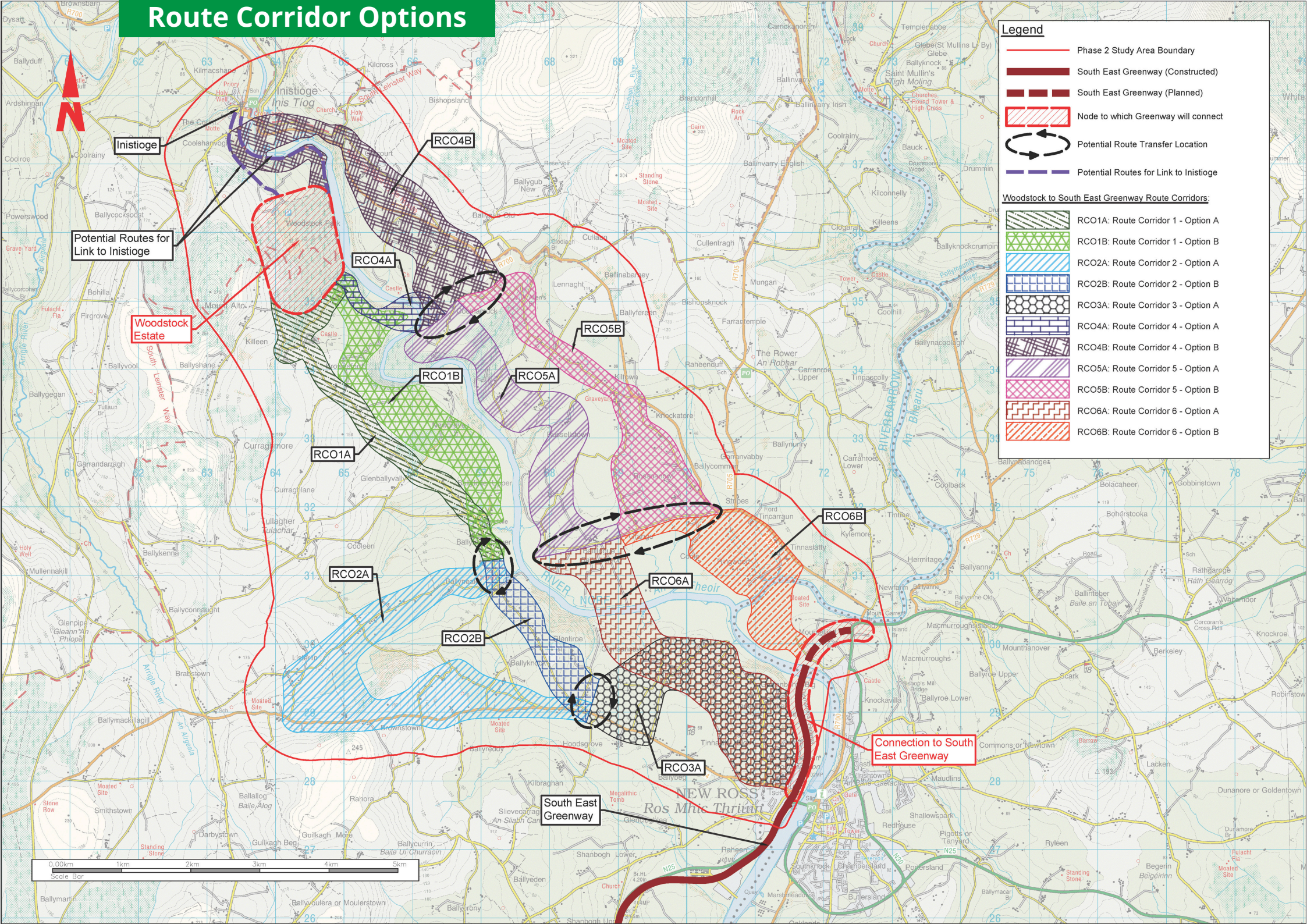
Route Corridor Options

Legend

- Phase 2 Study Area Boundary
- South East Greenway (Constructed)
- South East Greenway (Planned)
- Node to which Greenway will connect
- Potential Route Transfer Location
- Potential Routes for Link to Inistioge

Woodstock to South East Greenway Route Corridors:

- RCO1A: Route Corridor 1 - Option A
- RCO1B: Route Corridor 1 - Option B
- RCO2A: Route Corridor 2 - Option A
- RCO2B: Route Corridor 2 - Option B
- RCO3A: Route Corridor 3 - Option A
- RCO4A: Route Corridor 4 - Option A
- RCO4B: Route Corridor 4 - Option B
- RCO5A: Route Corridor 5 - Option A
- RCO5B: Route Corridor 5 - Option B
- RCO6A: Route Corridor 6 - Option A
- RCO6B: Route Corridor 6 - Option B





Public Consultation - Get Involved



Public Consultation No. 2 on the Proposed Route Corridor Options will take place between the 6th and 27th of April 2026. This consultation is being held online through the project website and an in-person public consultation day.



Monday 13th April 2026
2:00pm - 7:00pm
Cois Abhann, Inistioge R95 CX52

The closing date for submissions is Monday 27th April 2026

Make a Submission



Feedback forms are available on the project website www.woodstocktosegreenway.ie and copies will also be available at the in-person Public Consultation events.

Feedback can be submitted as follows:

Online: www.woodstocktosegreenway.ie

Email: WoodstocktoSEGLink@kilkennycoco.ie

Post: Kilkenny County Council, County Hall, John Street, Kilkenny R95 A39T

Project Timeline

